

Henan SinoDiam International Co., Ltd.



Who We Are

As an engineering, production, and marketing diamond company, we represent ourselves as a "Solution Provider for the International Diamond customers". With over 20 years of combined experience in the industrial diamond and metallic coating industries, SionDiam has a wealth of knowledge and expertise that's incomparable. We utilize this experience to provide both companies and individuals with quality and innovative products they can truly count on.

SinoDiam is specialized in R&D, production and marketing of industrial diamond powder, micron diamond and diamond products. The products line covers more than 100 models such as the HPHT lab grown diamond, metal bond saw grit diamond, Metal bond crystalline and non-crystalline mesh size diamond, resin bond mesh size diamond, general and professional micron diamond, CBN, Metallic Coating, polycrystalline diamond compact (PDC), polycrystalline diamond (PCD), diamond polishing compound and pre-alloyed metal powders.

Application includes jewelry diamond, diamond cutting saw blade, diamond coring bits, diamond wiring, diamond grinding cup wheels, diamond polishing on the concrete, stone, Metal bond, verified bond, resin bonded and all kinds of electroplating products, for processing stones, hard alloy, magnetic materials, natural diamond, gem. PDC bits for oil and mining drilling.

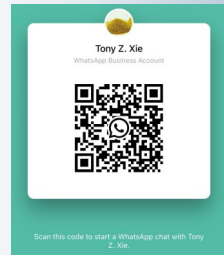


Content

HPHT Lab Grown Diamond	4
HPHT Lab Grown Diamond—Finished Cut	5
Saw Grit Diamond	6—7
Crystalline Mesh Diamond	8
Non-Crystalline Mesh Diamond (RVD)	9
Micron Diamond	10-11
Resin Bond Diamond	12
CBN	13
Metallic Coating	14-15



Wechat



WhatsApp



Website

HPHT Lab Grown Diamond Rough



Carat Weight	Clarity Grade		Size
0.6-0.8ct	1A	VS-SI1	4.0-5.0mm
	1B	SI2-SI3	
0.8-1.0ct	1A	VS-SI1	4.5-5.5mm
	1B	SI2-SI3	
0.6-1.0ct	2A	SI3-I1	4.0-5.5mm
	2B	I1-I3	
1.0-1.5ct	1A	VS-SI1	5.0-6.0mm
	1B	SI2-SI3	
	2A	SI3-I1	
	2B	I1-I3	
1.5-2.0ct	1A	VS-SI1	5.5-6.5mm
	1B	SI2-SI3	
	2A	SI3-I1	
	2B	I1-I3	
2.0-2.5ct	1A	VS-SI1	6.5-7.5mm
	1B	SI2-SI3	
	2A	SI3-I1	
	2B	I1-I3	
2.5-3.0ct	1A	VS-SI1	7.0-8.0mm
	1B	SI2-SI3	
	2A	SI3-I1	
	2B	I1-I3	

3.0-4.0ct	1A	VS-SI1	7.0-8.5mm
	1B	SI2-SI3	
	2A	SI3-I1	
4.0-5.0ct	2B	I1-I3	7.5-9.0mm
	1A	VS-SI1	
	1B	SI2-SI3	
	2A	SI3-I1	
5.0-6.0ct	2B	I1-I3	8.5-10mm
	1A	VS-SI1	
	1B	SI2-SI3	
	2A	SI3-I1	
6.0-7.0ct	2B	I1-I3	9-10.5mm
	1A	VS-SI1	
	1B	SI2-SI3	
	2A	SI3-I1	
7.0-8.0ct	2B	I1-I3	9-11mm
	1A	VS-SI1	
	1B	SI2-SI3	
	2A	SI3-I1	
8.0ct +	2B	I1-I3	9mm+
	1A	VS-SI1	
	1B	SI2-SI3	
	2A	SI3-I1	

Lab Grown Diamond

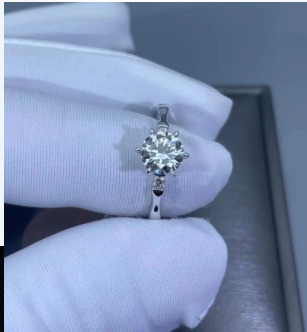


Finished Cut

HPHT Lab Grown Diamond



Finished cut lab grown diamond with IGI certified



Customized diamond ring, diamond necklace, diamond earring, diamond bracelet.



SND890

Top Quality Saw Girt Diamond For Making Pro Diamond Tools

Regular cube-octahedron shape, with great thermal stability, applied for making the high quality pro blades, core bits, and diamond wires.



SND880

Complete Shape And Straight Crystal Edges

High quality diamond grit with a regular cube-octahedron shape, applied for the diamond cutting, diamond coring, diamond wiring on the



SND860

Good For General Diamond Tools And Geological Tools

Medium to high toughness, blocky crystal shape, medium to high transparency and impact resistance, with relatively high thermal stability. Applied for



SND840

Medium Quality, Good Wear Resistance

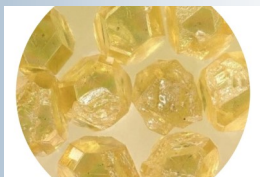
Complete shape of cube-octahedron, medium toughness and thermal stability, good wear resistance. Applied for making most of the medium quality



SND830

For General Purpose Cutting And Grinding Application

Low to Medium toughness, semi-blocky shape, low to medium transparency, impact resistance and thermal stability. Applied for making blade and grinding wheels



SND820

Low Toughness Diamond With High Efficiency.

Comparatively regular shape, low transparency, low impact resistance and low thermal stability. Applied for making the diamond tools with medium-low load.



SND815

Can Be Mixed With Higher Grade Diamond To Achieve Better Efficiency

Applied to making economy or medium quality diamond tools for processing stone, ceramic and glass.

	SND815	SND820	SND830	SND840	SND860	SND880	SND890
30/35	✓	✓	✓	✓	✓	✓	✓
35/40	✓	✓	✓	✓	✓	✓	✓
40/45	✓	✓	✓	✓	✓	✓	✓
45/50	✓	✓	✓	✓	✓	✓	✓
50/60	✓	✓	✓	✓	✓	✓	×
60/70	✓	✓	✓	✓	✓	✓	×
70/80	✓	✓	✓	✓	✓	✓	×

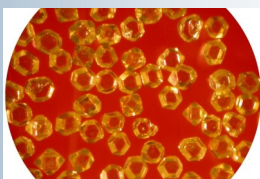




SND880

High Toughness Fine Size Diamond For Requiring Long Life

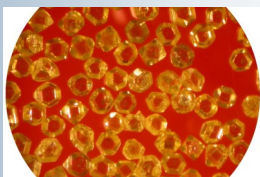
Certain of Cuboctahedra shape, high impact strength, applied in the condition requiring high grinding rate, like electroplated tools to grind



SND860

Perfect For Applications Where You Need The Crystal Breakdown But Still Want To Extend The Life

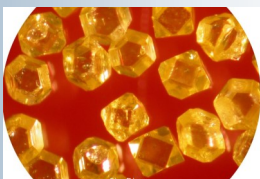
Diamond with semi-blocky crystals with angular shapes and medium high toughness, applied to make grinding & abrasives where to process



SND840

Equivalent To MBD6 For Grinding, Polishing, Lapping

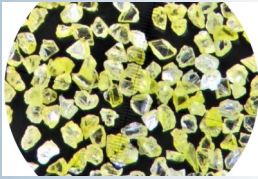
Semi-irregular shape and lower intrinsic toughness, excellent value for less demanding abrasive applications, suitable for the diamond tools of



SND820

Suitable For the Application Of High Efficiency Diamond Tools.

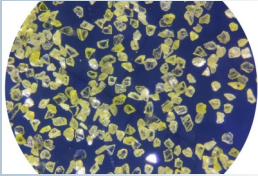
Mix of regular and angular crystals, medium-low toughness with blocky shaped crystals.



SND-G15

High Toughness Crushed Yellow RVD

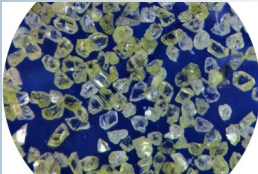
Crushed from the ZND2115 and similar grade diamond, high hardness and toughness, applied in vitrified bond, resin bond and all kinds of electroplating products.



SND-G10

Crushed Yellow RVD Diamond

Crushed from ZND2110 and similar grade diamond, applied in resin bond, vitrified bond and electroplating tools for processing stone, hard alloy, natural diamond,



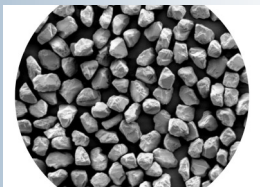
SND-G05

Crushed Green RVD

Applied to making economy or medium quality diamond tools for processing stone, ceramic and glass.

	SND-G05	SND-G10	SND-G15	SND820	SND840	SND860	SND880
80/100	✓	✓	✓	✓	✓	✓	✓
100/120	✓	✓	✓	✓	✓	✓	✓
120/140	✓	✓	✓	✓	✓	✓	✓
140/170	✓	✓	✓	✓	✓	✓	✓
170/200	✓	✓	✓	✓	✓	✓	✓
200/230	✓	✓	✓	✓	✓	✓	✓
230/270	✓	✓	✓	✓	✓	✓	✓
270/325	✓	✓	✓	✓	✓	✓	✓
325/400	✓	✓	✓	✓	✓	✓	✓

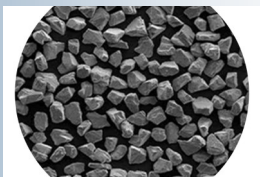




SND-M15

High Toughness Micron Diamond Powder Polishing Abrasive

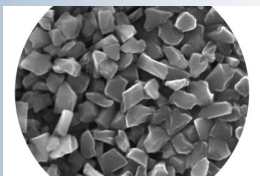
High quality high toughness micron diamond powder, with block grit, relatively concentrated particle size distribution. Suitable for high requirement lapping and



SND-M10

Standard Quality Made Of The Yellow RVD For General Purpose Application

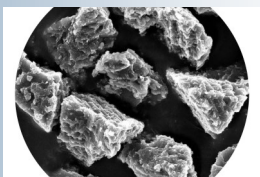
Irregular crystal shape with relatively concentrated particle size distribution, low impurity content, high efficiency. Can be used in resin, vitrified, metal bond and



SND-M05

Good Value Micron Diamond With High Efficiency

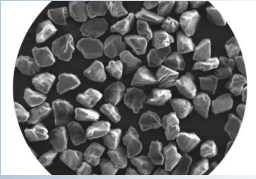
Irregular sharp edges, clean surfaces, suitable for requiring high efficiency but not high precision polishing, , like stones, tiles, jade & gem, etc.



SND-PL

Polycrystalline-Like Diamond Powder

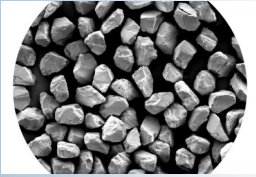
It has the similar feature as the polycrystalline diamond, but lower cost. Made of the sorted diamond micron, under a special chemical treatment, poly-like diamond has a deactivation edges, these honeycomb



SND-MDW

Professional Micron Diamond For Diamond Wire

High strength blocky crystal shape, concentrated PSD, uniform particle size and shape. Special designed for making silicon wafer cutting diamond wire, jewelry



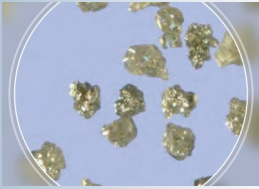
SND-MPCD

Professional Micron Diamond For PCD/PDC

Very low impurity, low Si content, concentrated PSD, good thermal stability and wear resistance. Also can be used on high quality metal bond, vitrified bond and



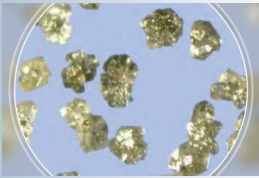
SND-R15



RVG, Standard Grade Blocky Resin Bond Diamond With Medium Friability

This Medium friability crystal demonstrates an ability to self sharpen which produces a free cutting action that is critical to maintain the

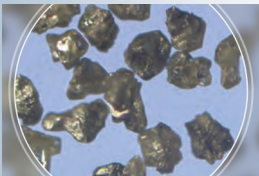
SND-R10



Economy Grade Semi-Blocky Resin Bond Diamond With High Friability

Slightly friable than SND-R15, Suitable for vitrified bond and resin bond (phenolic and polyimide) systems, provide stable performance where low

SND-R05



Highest Friability for High Precision Grinding Applications

Highest Friability resin bond diamond particles with a crystal structure that promotes micro fracturing. Effective for high precision grinding application

	60/80	80/100	100/120	120/140	140/170	170/200	200/230	230/270	270/325	325/400
SND-R15	✓	✓	✓	✓	✓	✓	✓	✓	✓	✓
SND-R10	✓	✓	✓	✓	✓	✓	✓	✓	✓	✓
SND-R05	✓	✓	✓	✓	✓	✓	✓	✓	✓	✓





CBN-A10

Amber Color CBN Abrasive Powder For Resin Bond Application

Strong self-sharpening and high grinding efficiency, can be used in resin bond, metal bond, metal bond and electroplated products to process the ferrous



CBN-A20

Amber Color wide range of application and long life

Regular crystal shape, high transparency, medium strength. Can be use in wide range of application on process the ferrous material and alloys.



CBN-B10

Black Massive Crystal, High Grinding Efficiency,

Irregular shape, rough surface and angular edges, can be used in resin bond and electroplated products to process the ferrous metal and alloys.



CBN-B20

Black Color, High Strength, High Impact Loads.

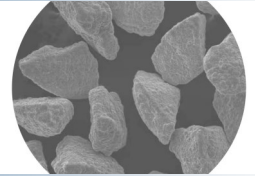
Good Sharpness and thermal stability, can be used in ceramic bond, metal bond, electroplated products.



Titanium Ti Coating

Gain The Weight 1‰ To 3‰

Avert to oxidize and graphitize when the diamond powder during the high temperature circumstance. Reduce the heat damage,

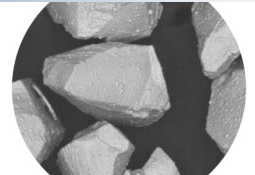


Nickel Ni Coating

Electroplating Plating & Chemical Plating

Increase the Weight 30% or 56%

Rough and spiny surface, improve the retention between diamond and bond, avoid the diamond peeling off, extend the tools life. Recommend for



Micron Powder Nickel Plating

Professional Coated For the Diamond Wire Application

Coated on the micron diamond powder, increased the weight by 30%, strong holding ability and less adhesion.

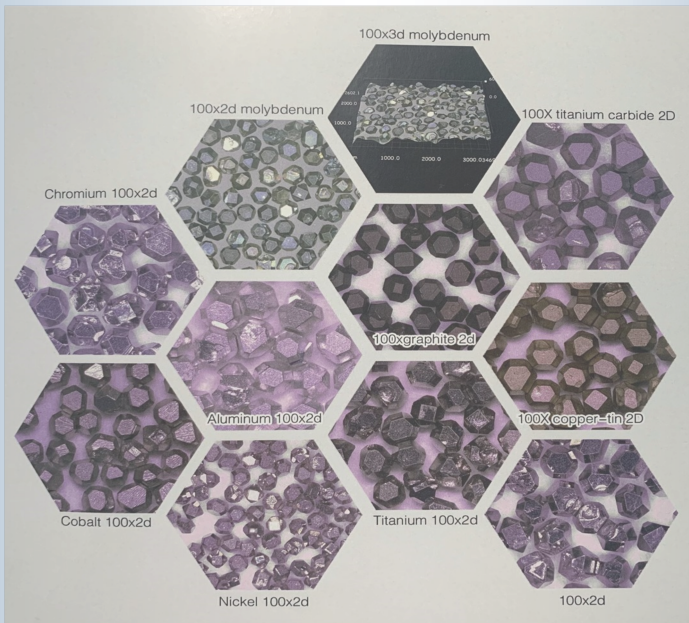


Dotted Diamond

The particles surface is rough and pitted, and the particles are prone to micro-breaking when sawing. Improve the grip of the tool matrix on diamond particles. Reduce tool processing current, processing noise, processing surface roughness. Designed for the tools not suitable for surface plating method to improve the holding force of particles and

Other Metallic Coating

Bond Type	Recommended Coating
Metal Bond	Titanium, Tungsten, Molybdenum, Chromium, Zirconium
Resin Bond	Iron-Nickel Alloy, Nickel, Cooper, Cooper-Tin Alloy, Aluminum
Vitrified Bond	Tungsten Carbide, Titanium Carbide, Carboned Titanium Nitride, Aluminum Titanium Nitride
Non-Metallic Coating	Carbon, Silicon



Cubic Boron Nitride (CBN)





Henan SinoDiam International Co., Ltd

**Professional Diamond Powder
Manufacturer & Trading Company**

**Address: 9 Yunshan Road, High-Tech District,
Zhengzhou, Henan, China. 450000**

Phone: +86-371-6323-9598

Email: info@diamondmicron.com